

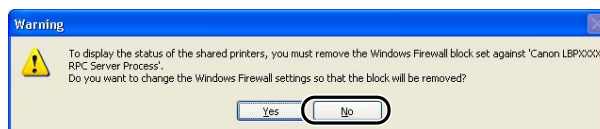
<Windows Firewall>

This document describes how to setup the printer when you are using an operating system equipped with Windows Firewall such as Windows XP Service Pack 2. Make sure that you read the information in this document thoroughly before using the printer.

Windows Firewall is a feature of Windows XP Service Pack 2 and other operating systems that protects your computer by blocking unauthorized access over the network. Because of this, you need to configure Windows Firewall to unblock access when you are using the printer on an operating system that is equipped with Windows Firewall. The procedures and settings that you need to perform depend on your system environment.

■ If you are not using a network environment (i.e. USB connection only)

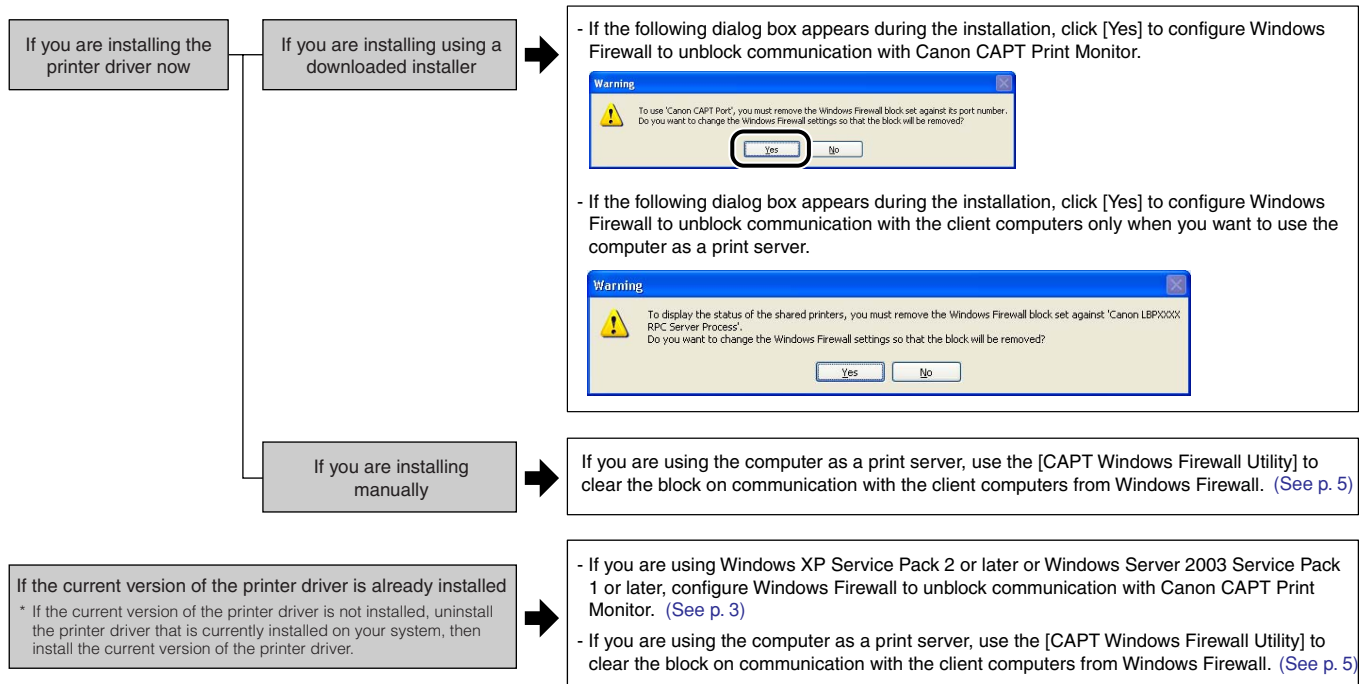
If you are using the printer by connecting it directly to the computer using a USB cable, there are no particular steps that you need to take. If the following screen is displayed while you are installing the printer driver, click [No].



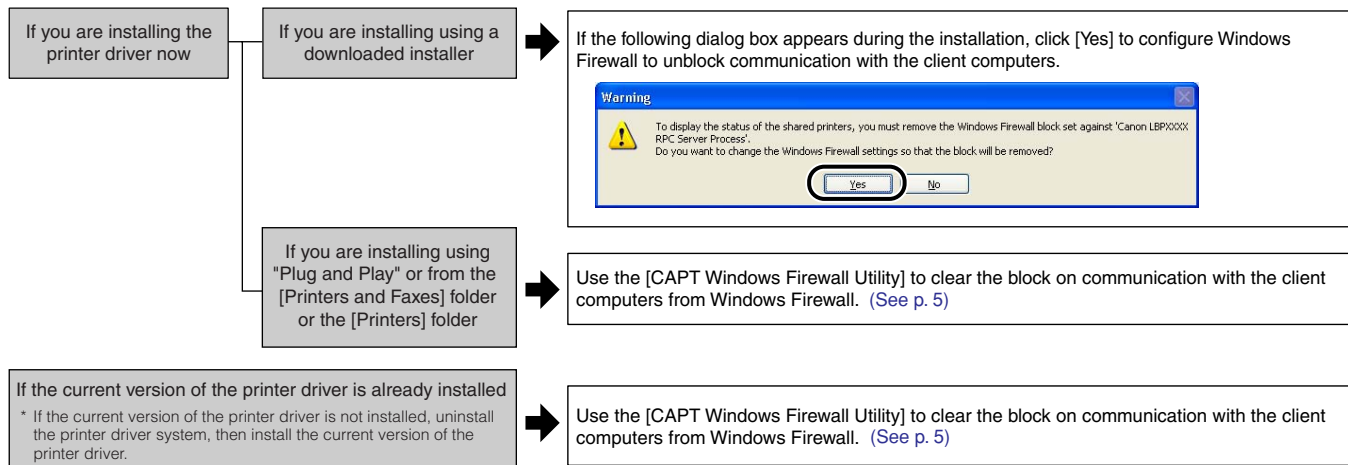
■ If you are using the printer in a network environment

You will need to perform the following tasks depending on your network environment and installation method.

• If the printer and computer are connected by a LAN cable (requires the optional network board)



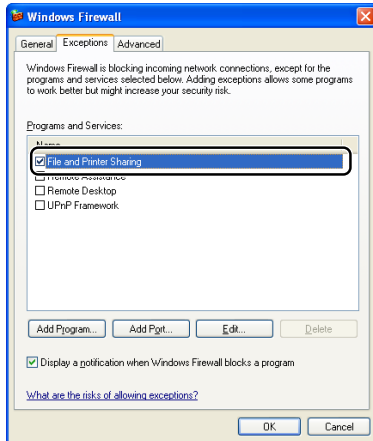
• If the printer is connected to a computer by a USB cable, and you are using the printer sharing function



* About the Client-Side Settings for Using the Printer Sharing Function

If you are using the printer sharing function, perform the following configuration on the client computer. If you do not configure the following settings on the client side, the printer status may not display properly in the Printer Status Window and you may not be able to access some of the printer functions.

- (1) Display the [Windows Firewall] ([Windows Firewall Settings] for Windows Vista) dialog box.
 - For Windows XP: From the [Start] menu, select [Control Panel], and then click [Network and Internet Connections] → [Windows Firewall].
 - For Windows Server 2003: From the [Start] menu, select [Control Panel] → [Windows Firewall].
 - For Windows Vista: From the [Start] menu, select [Control Panel], and then click [Allow a program through Windows Firewall]. (If the [User Account Control] dialog box appears, click [Continue].)
- (2) In the [Exceptions] sheet in the [Windows Firewall] ([Windows Firewall Settings] for Windows Vista) dialog box, select the [File and Printer Sharing] check box, and then click [OK].



What To Do If the Printer Driver Is Already Installed

If this printer driver is already installed and you have updated your operating system to Windows XP Service Pack 2 or later or Windows Server 2003 Service Pack 1 or later, be sure to configure Windows Firewall to unblock communication with Canon CAPT Print Monitor using either of the following methods, <Method 1> or <Method 2>.

To perform <Method 1>, you will need to download the [Canon CAPT Print Monitor] from the Canon website.

- **If the current version of the printer driver is not already installed (when an older version of the printer driver is installed)**

Uninstall the printer driver that is currently installed on your computer then install the new version of the printer driver.

- **If the you are using the computer you installed as a print server**

After clearing the block on the [Canon CAPT Print Monitor], use the [CAPT Windows Firewall Utility] to clear the Windows Firewall block on communication with client computers.

Refer to "Using the CAPT Window Firewall Utility" (See on p. 5) for instructions on installing the [CAPT Windows Firewall Utility].

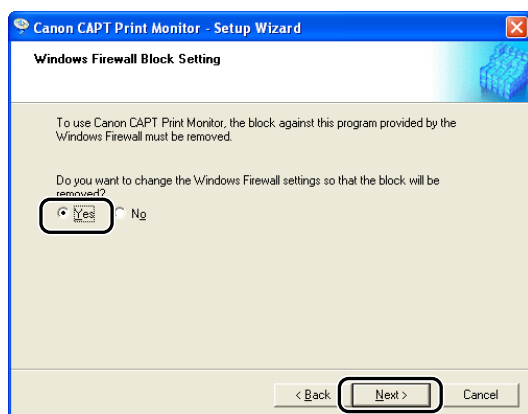
<Method 1> Reinstalling the Canon CAPT Print Monitor

When you unzip the downloaded file (the file for installing the Canon CAPT Print Monitor), a folder is created. Double-click on the [Setup.exe] file in this folder to start the installer.

Install Canon CAPT Print Monitor following the instructions on the screen.

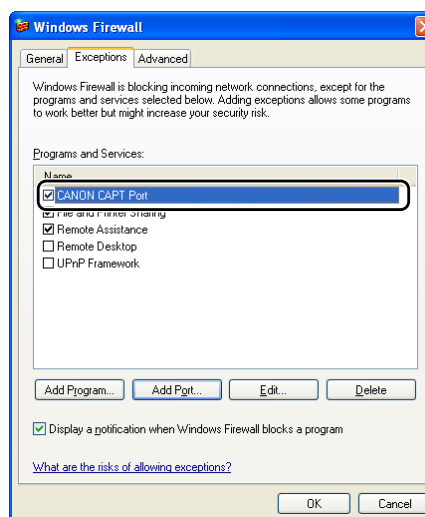
NOTE

- When the following screen appears, select [Yes] and then click [Next].



- To check if the Windows Firewall block has been properly cleared, use the following procedure.

1. Display the [Windows Firewall] dialog box.
 - For Windows XP: From the [Start] menu, select [Control Panel], and then click [Network and Internet Connections] → [Windows Firewall].
 - For Windows Server 2003: From the [Start] menu, select [Control Panel] → [Windows Firewall].
2. Verify that [CANON CAPT Port] has been added to the [Programs and Services] list in the [Exceptions] sheet in the [Windows Firewall] dialog box.



This clears the block from Windows Firewall.

<Method 2> Configuring Windows Firewall

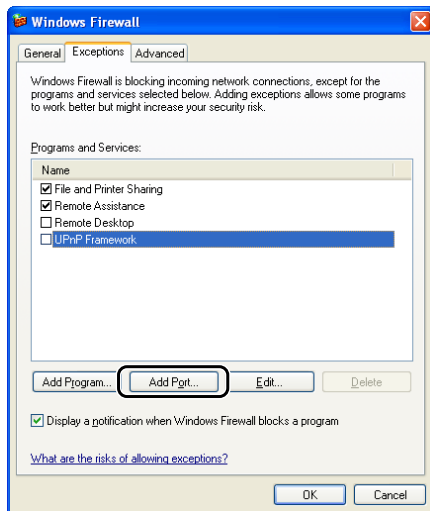
Perform the following procedure.

1 Display the [Windows Firewall] dialog box.

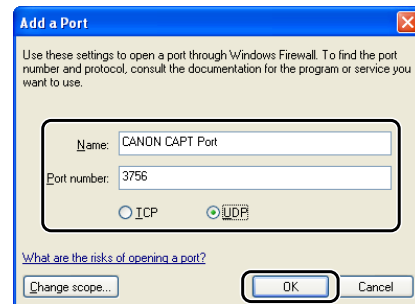
For Windows XP: From the [Start] menu, select [Control Panel], and then click [Network and Internet Connections] → [Windows Firewall].

For Windows Server 2003: From the [Start] menu, select [Control Panel] → [Windows Firewall].

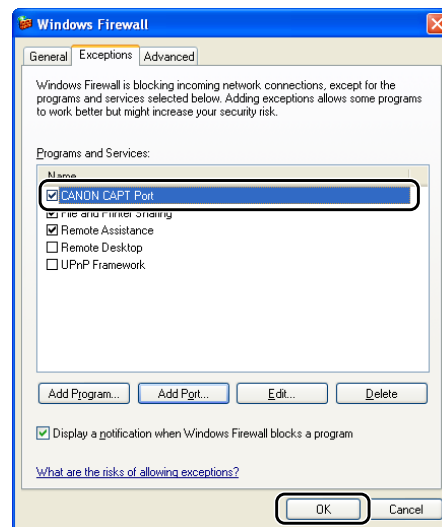
2 Open the [Exceptions] sheet, then click [Add Port].



3 Enter "CANON CAPT Port" in the [Name] field, "3756" in the [Port number] field, select [UDP], and then click [OK].



4 Verify that [CANON CAPT Port] has been added to the [Programs and Services] list, then click [OK].



This clears the block from Windows Firewall.

Using the CAPT Window Firewall Utility

If your print server is installed with an operating system equipped with Windows Firewall, such as Windows XP Service Pack 2, you need to configure Windows Firewall to unblock communication between the print server and client computers.

This section explains how to use the [CAPT Windows Firewall Utility] to configure Windows Firewall to unblock communication with client computers.

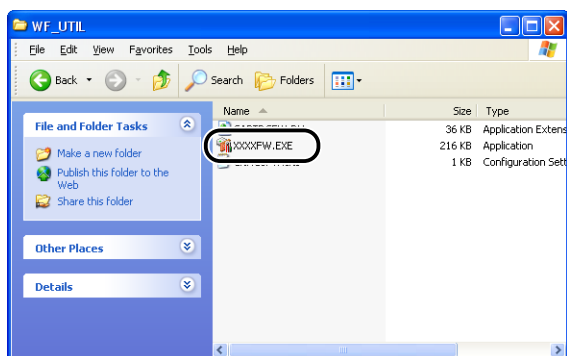
Use the [CAPT Windows Firewall Utility] in the following circumstances.

- The printer driver was installed using "Plug and Play" or from the [Printers and Faxes] folder or the [Printers] folder.
- The printer driver was already installed and you upgraded your operating system to Windows XP Service Pack 2 or another operating system equipped with Windows Firewall

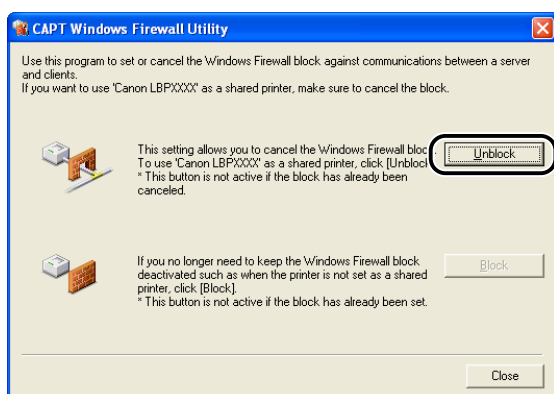
1 When you unzip the downloaded file (the file for installing the printer driver), a folder is created.

2 Double-click the created folder → [WF_UTIL] → [xxxxFW.EXE]. (where xxxx varies depending on your printer model.)

The [CAPT Windows Firewall Utility] starts.

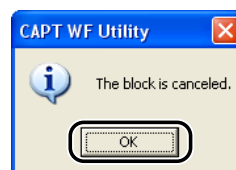


3 Click [Unblock].



You cannot click [Unblock] if the firewall is already configured to unblock communication with client computers.

4 Click [OK].



NOTE

To check if the Windows Firewall block has been properly cleared, use the following procedure.

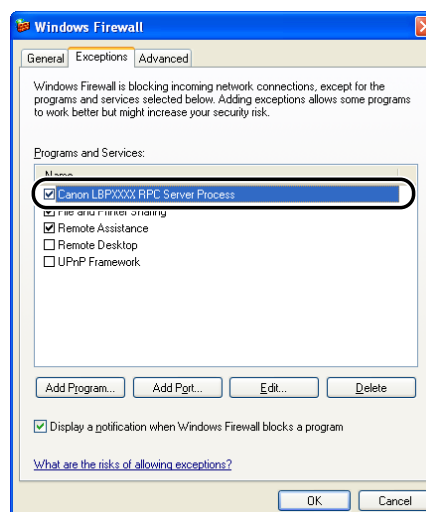
1. Display the [Windows Firewall] ([Windows Firewall Settings] for Windows Vista) dialog box.

- For Windows XP: From the [Start] menu, select [Control Panel], and then click [Network and Internet Connections] → [Windows Firewall].

- For Windows Server 2003: From the [Start] menu, select [Control Panel] → [Windows Firewall].

- For Windows Vista: From the [Start] menu, select [Control Panel], and then click [Allow a program through Windows Firewall]. (If the [User Account Control] dialog box appears, click [Continue].)

2. Make sure that the [Canon LBPxxxx RPC Server Process] check box is selected in the [Exceptions] sheet in the [Windows Firewall] ([Windows Firewall Settings] for Windows Vista) dialog box. (xxxx varies depending on the printer.)



Windows Firewall is now configured to unblock communication with client computers.

Canon, the Canon logo, and LBP are trademarks of Canon Inc.

Microsoft and Windows are registered trademarks of Microsoft Corporation in the United States and/or other countries.

Windows Server and Windows Vista are trademarks of Microsoft Corporation.

Other product and company names herein may be the trademarks of their respective owners.

In this manual, product names and model names are abbreviated as follows:

Microsoft® Windows® XP operating system:	Windows XP
Microsoft® Windows Server™ 2003 operating system:	Windows Server 2003
Microsoft® Windows Vista™ operating system:	Windows Vista
Microsoft® Windows® operating system:	Windows